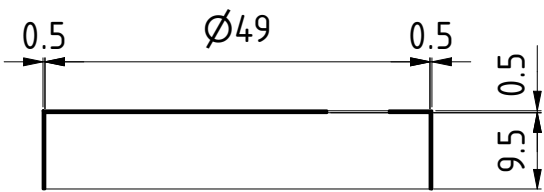
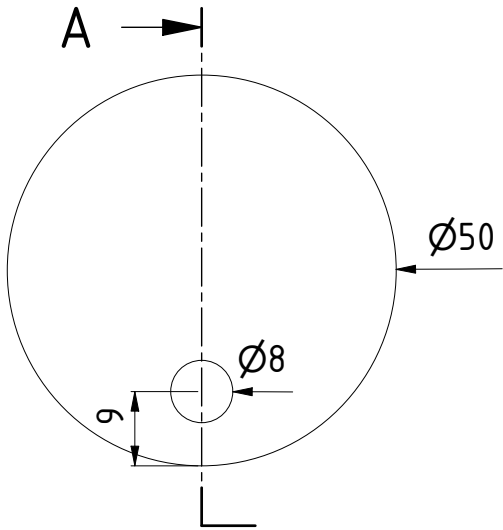




SIDE VIEW



SECTION A-A



TOP VIEW

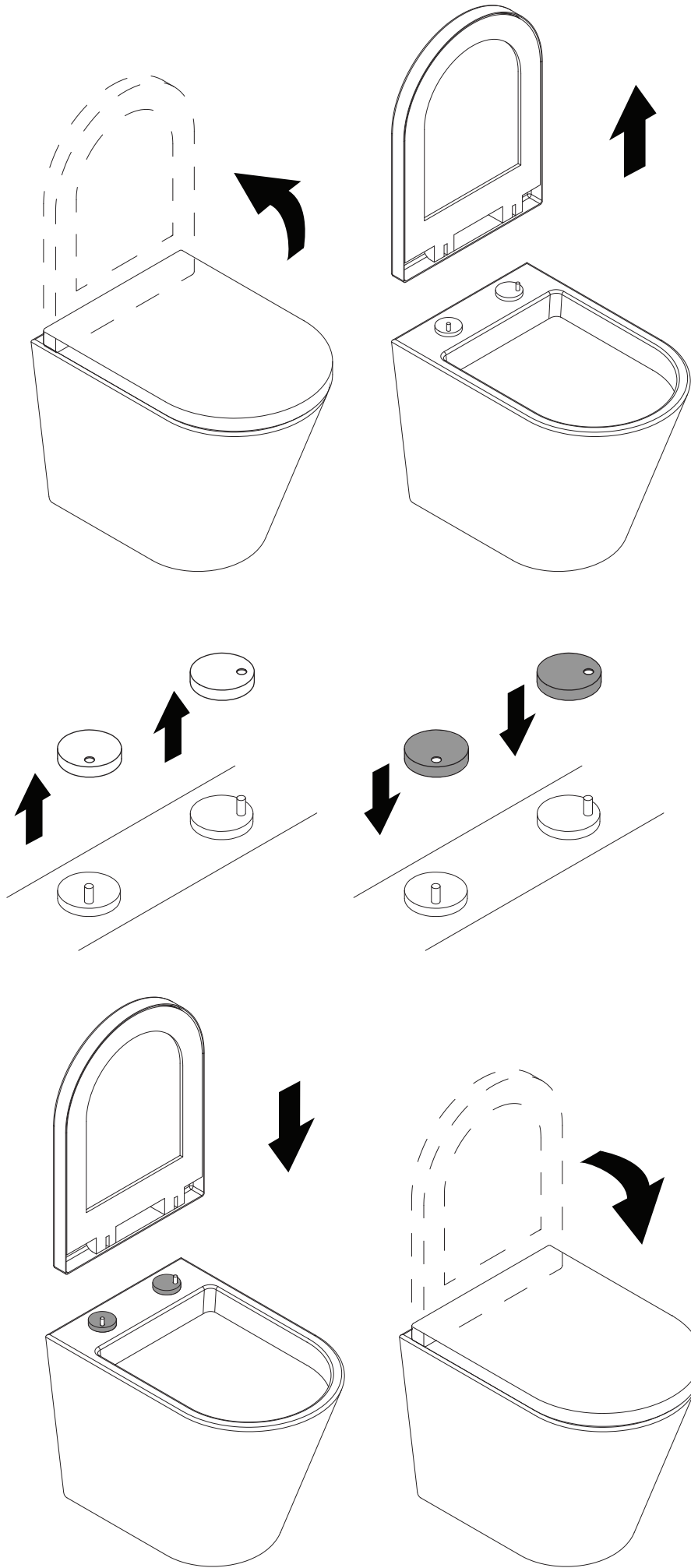
Note: Dimensions are nominal measurements only

SPECIFICATIONS	
RECOMMENDED USE	Domestic
MATERIAL	Stainless Steel
WARRANTY	Structure: 5 years Finish: 5 Years

Disclaimer: Products in this specification manual must by regulation be installed by licensed and registered trade people. The manufacturer/distributor reserves the right to vary specifications or delete models from their range without prior notification. Dimensions are nominal measurements only. Dimensions and set-outs listed are correct at time of publication however the manufacturer/distributor takes no responsibility for printing errors. All ABI Products are designed in Australia. Copyright ABI Interiors 2019. WWW.ABIINTERIORS.COM.AU

INSTALLATION GUIDE

Note: This product must be installed by a licensed tradesperson. This is a general installation guide - there are many factors that are involved that can alter the installation method.



- 1 Lift toilet seat into open vertical position.

Remove toilet seat by unfixing toilet seat brackets.

Note: Seat bracket fixing method varies with toilet seat design.

- 2 Remove existing toilet clips from brackets.

Replace with **ABI** Sela Toilet Clips.

- 3 Mount toilet seat back into position by fixing toilet seat brackets.

Lower toilet seat into closed position.

