

SPECIFICATIONS

RECOMMENDED USE

Domestic

COLOUR AVAILABILITY



PRESSURE RATING

Recommended minimum working pressure 150kPa
Recommended maximum working pressure 500kPa
Hot and cold water inlet pressure should be equal

TEMPERATURE RATING

Maximum continuous working temperature 75°C
If the water temperature exceeds 75°C, an approved tempering valve must be fitted

SUITABLE HOT WATER UNITS

Storage tank: Yes
Continuous Flow: Yes
Gravity Feed: Not suitable

STANDARDS

WELS Star Rating(5 Star) – Nominal Flow Rate(5.5 L/M)
Registration No.(T32356)

WARRANTY

Structure: 25 years | Finish: 5 years | Cartridge: 10 years

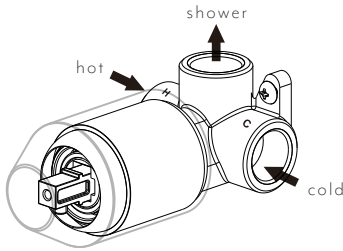
INSTALLATION MANUAL

This product must be installed by a qualified plumber.

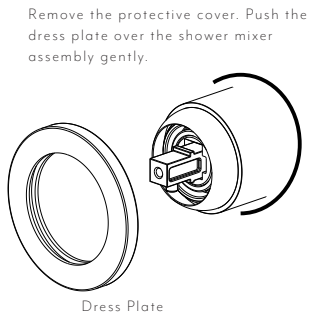
- 1 Fasten screws to secure the shower mixer assembly in place.



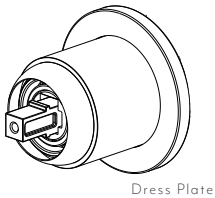
- 2 Attach water supply and water outlet. TEST AND CHECK FOR LEAKS



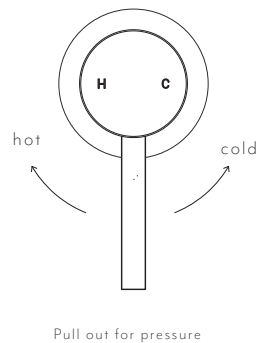
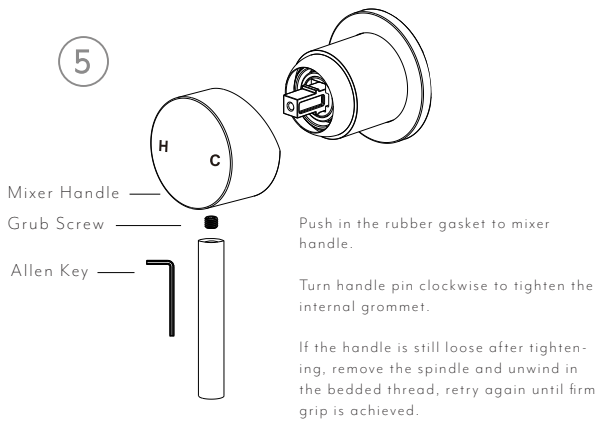
- 3 Create a 45mm round hole in cement sheet and tiles



- 4 Assemble the plate and fix it in place.

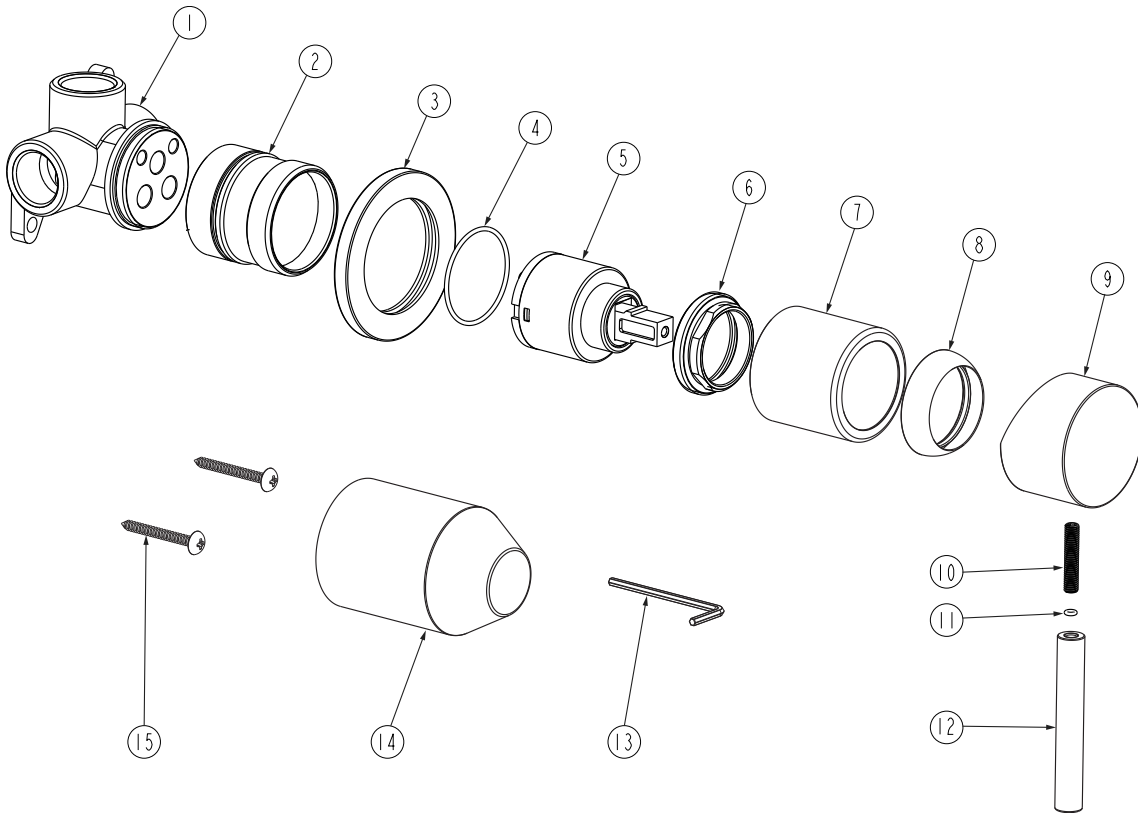


- 5



EXPLODED VIEW

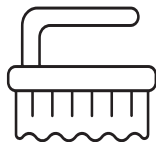
- Item Description Code
- 1-2 Body
 - 3 Back Plate
 - 4 Rubber Ring
 - 5 Cartridge
 - 6 Locking Nut
 - 7 Sleeve
 - 8 Dome
 - 9-12 Handle
 - 13 Allen Key
 - 14 Protective Case
 - 15 Fixing Screws



Regularly clean with mild liquid detergent or soap and water



DO NOT use cream cleaners or bleach. These substances are abrasive



DO NOT use cleaning pads with abrasive surfaces as this may scratch the material