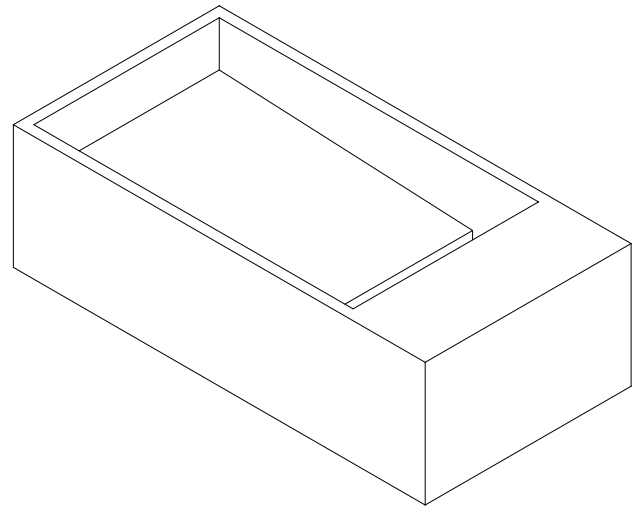
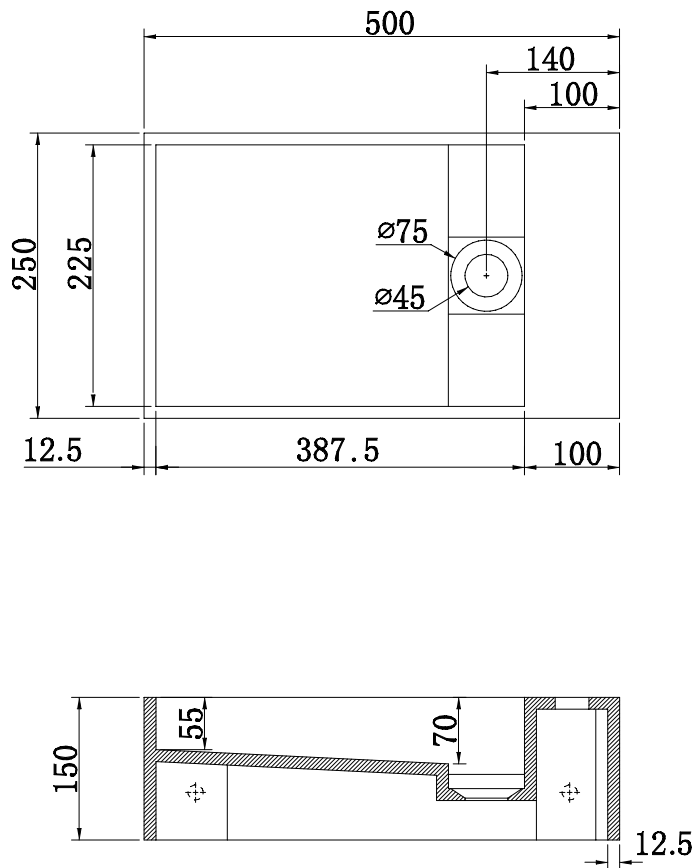




# CYRUS WALL MOUNTED BASIN - 250



## SPECIFICATIONS

### RECOMMENDED USE

Domestic

### COLOUR AVAILABILITY

Matte White

### MATERIAL

Solid Surface

### INSTALLATION

Wall Mounted

\*To be used with a bench mounted mixer or a spout with reach less than 110mm

**Note: water tap hoses are not able to be concealed under basin.**

### OVERFLOW

N/A

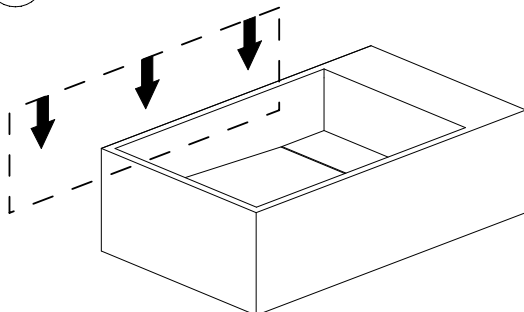
### WARRANTY

Structure: 5 years | Finish: 5 years

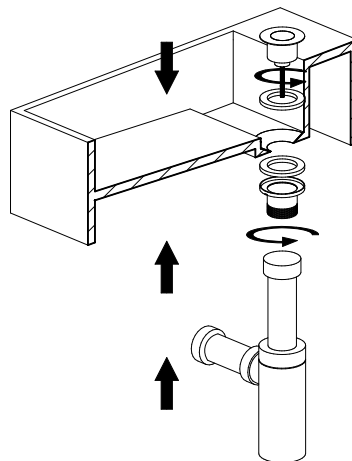
## INSTALLATION GUIDE

Note: This product must be installed by a licensed trade  
This is a general installation guide - there are many factors that are involved that can alter the installation method.

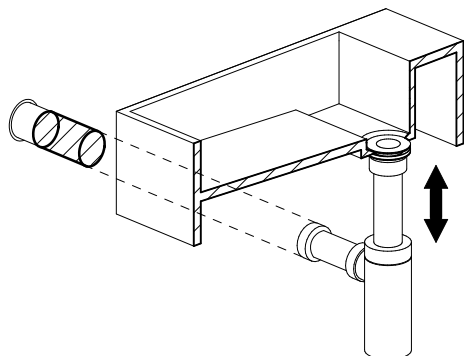
- 1 Check the desired height of basin from floor.



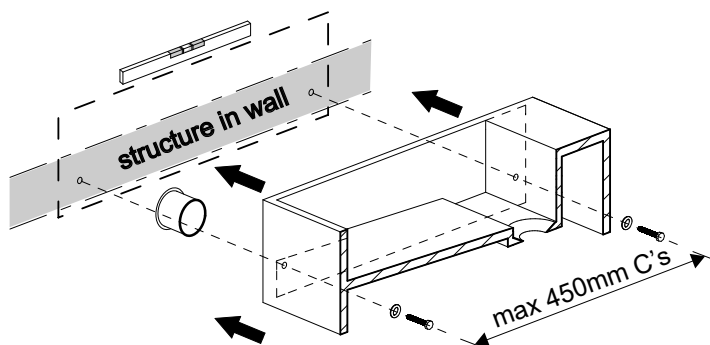
- 2 Fit waste and trap to basin.



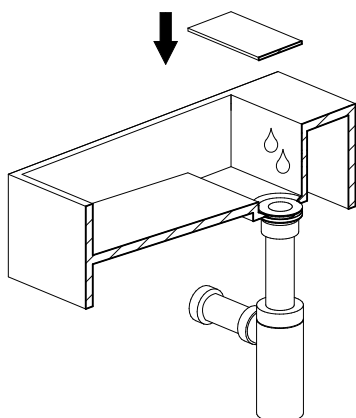
- 3 Hold basin against wall aligning outlet of trap with waste pipe. Extend telescopic trap up or down to find desired height & cut waste to suit trap.



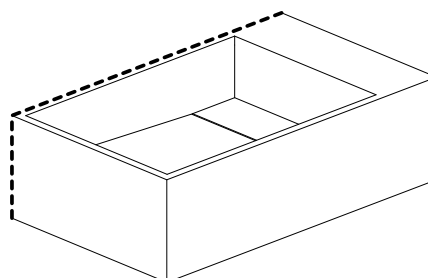
- 4 If correct height and position is suitable, level the top of the basin & mark out desired position.  
Drill holes through the back of basin wall.  
Fix basin into structural support in wall.



- 5 Secure plumbing to basin and wall outlet.  
Test by running water through the waste.  
Place the cover plate over drain.



- 6 Silicon top and sides of basin if necessary.



## INSTALLATION - MINI SPOUT DETAIL

Note: It is recommended this product be used in conjunction with **ABI**'s mini wall mounted spout due to a limited reach distance to basin waste.

