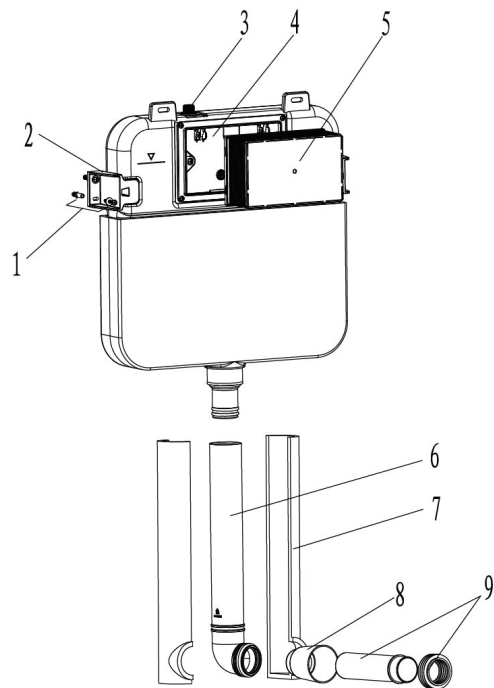




Disclaimer: Products in this specification manual must by regulation be installed by licensed and registered trade people. The manufacturer/distributor reserves the right to vary specifications or delete models from their range without prior notification. Dimensions are nominal measurements only. Dimensions and set-outs listed are correct at time of publication however the manufacturer/distributor takes no responsibility for printing errors. All ABI Products are designed in Australia. Copyright ABI Interiors Pty Ltd 2021.

# INSTALLATION GUIDE

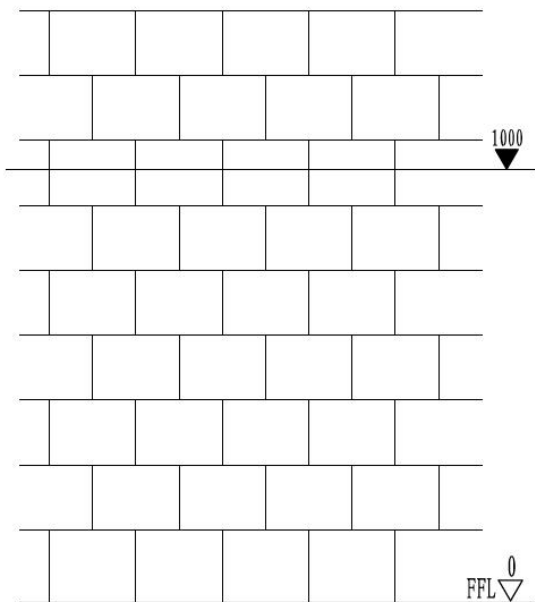
- 1. Please adhere to the following installation instructions.
- We shall not be responsible for failures and loss that are contributed to improper installation.
- 2. Please confirm the fixation location of cistern prior to installation and obtain the finished floor surface. Draw FFL on installation wall and follow it as baseline from ZERO (0) level.
- 3. The instructions have been composed based on the latest product specifications. We reserve the right to make modifications to the packaging and specifications without providing prior notification



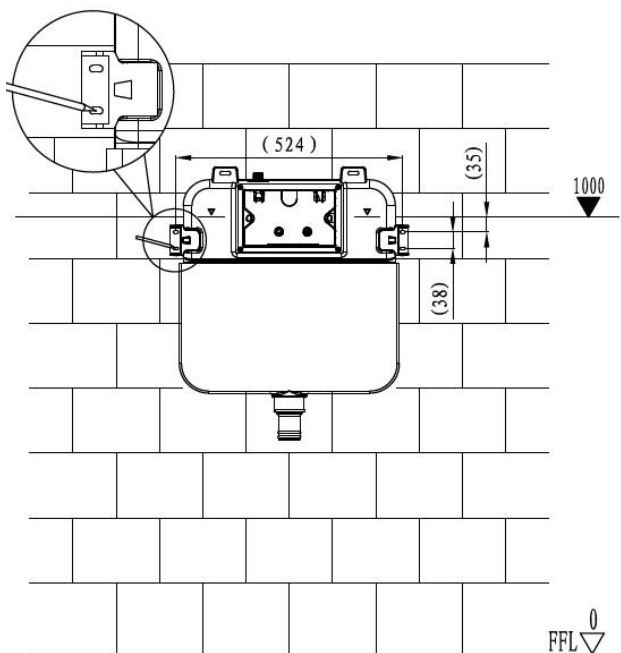
PARTS LIST

| No. | Description         | Qty | Function  |
|-----|---------------------|-----|---|
| 1   | Expansion Screw     | 1   | Fixation of concealed cistern   |
| 2   | Cistern Fixing Clip | 2   |   |
| 3   | Angle Valve         | 1   | Fill valve inlet and shut-off   |
| 4   | Cistern Cover       | 1   | Airproof tank and mounting of lockingbracket  |
| 5   | Plastic Holder      | 1   | To reserve space for installation of actuator at wall building<br>To prevent dust and impurities into tank at wall building |
| 6   | Flush Pipe          | 1   | Water inlet to ceramic bowl   |
| 7   | Tube Cover          | 2   | To protect flush pipe   |
| 8   | Piping Cover        | 1   | To reserve space for straight tube and flush pipe   |
| 9   | Straight Tube       | 1   | To join cistern into ceramic bowl (cutting in accordance with wall thickness)   |

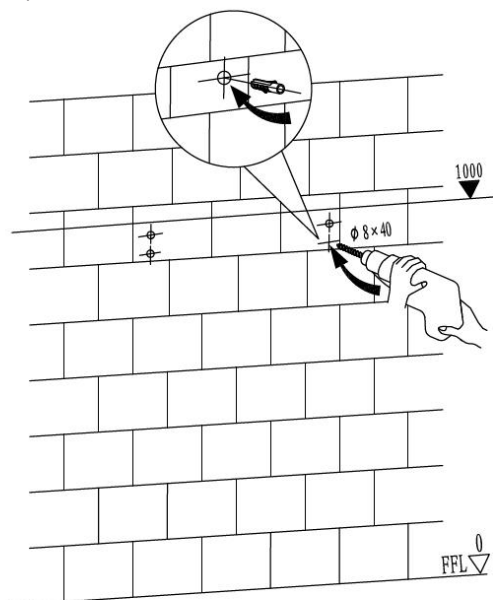
- ① Determine the position of Im line and the position of drilling holes



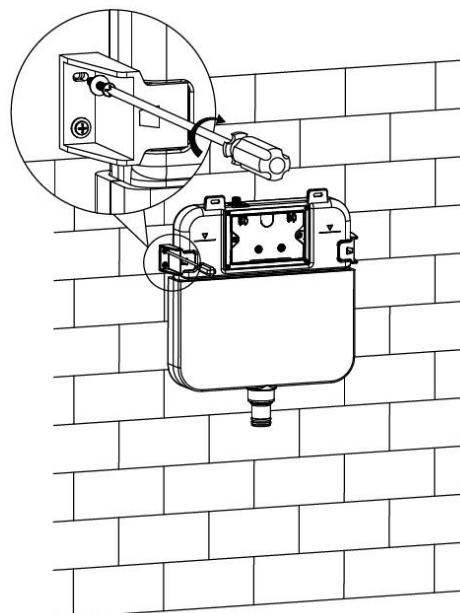
Note: Follow the practical location of iron bracket to drill properly



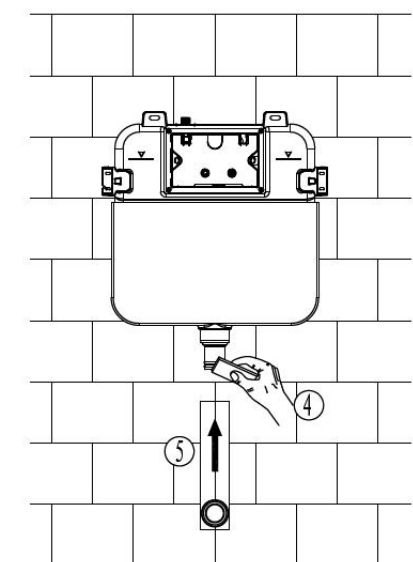
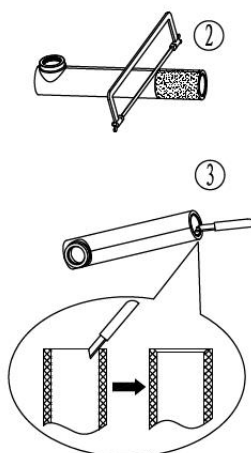
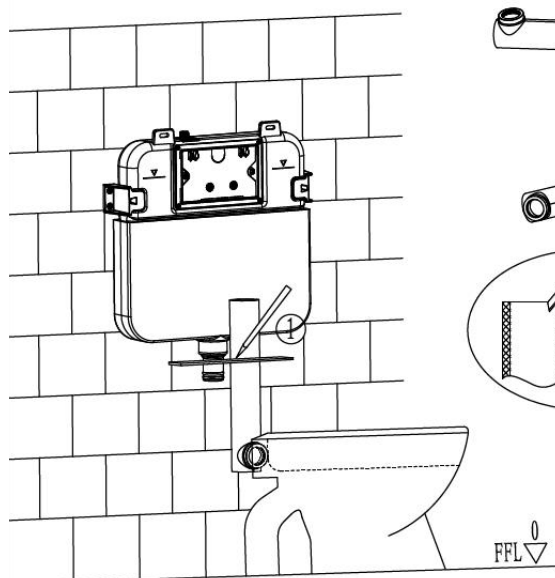
② Drilling and installation of expansion screw



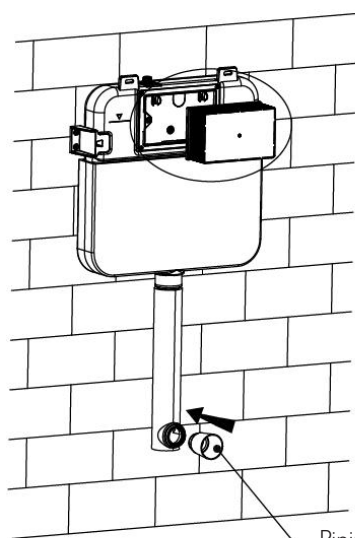
③ Installation of concealed cistern



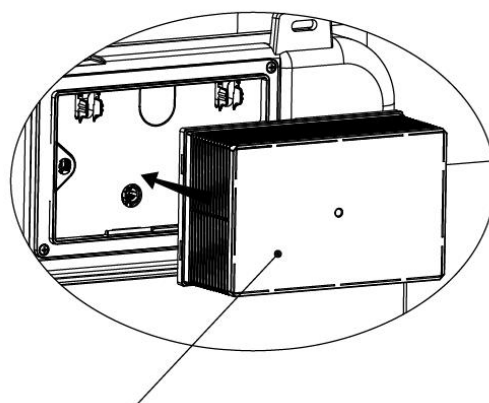
④ Installation of flush pipe



⑤ Mounting of installation accessories

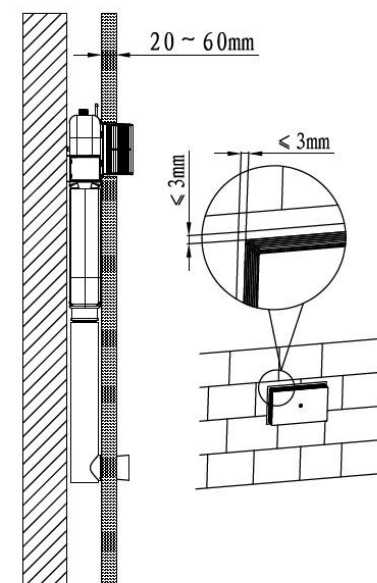
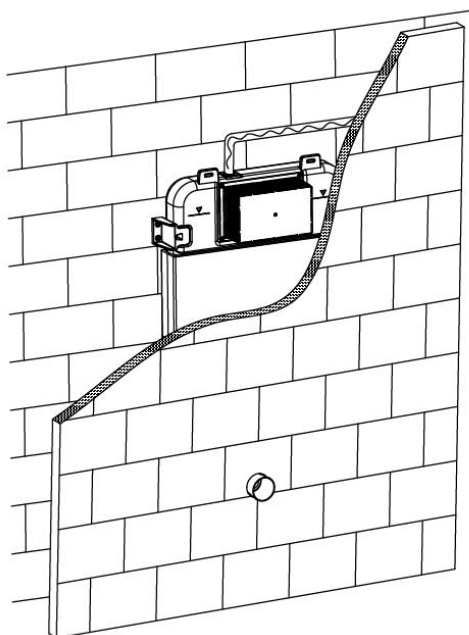


Piping stopper 1# (to reserve space for flushing piping at wall building)

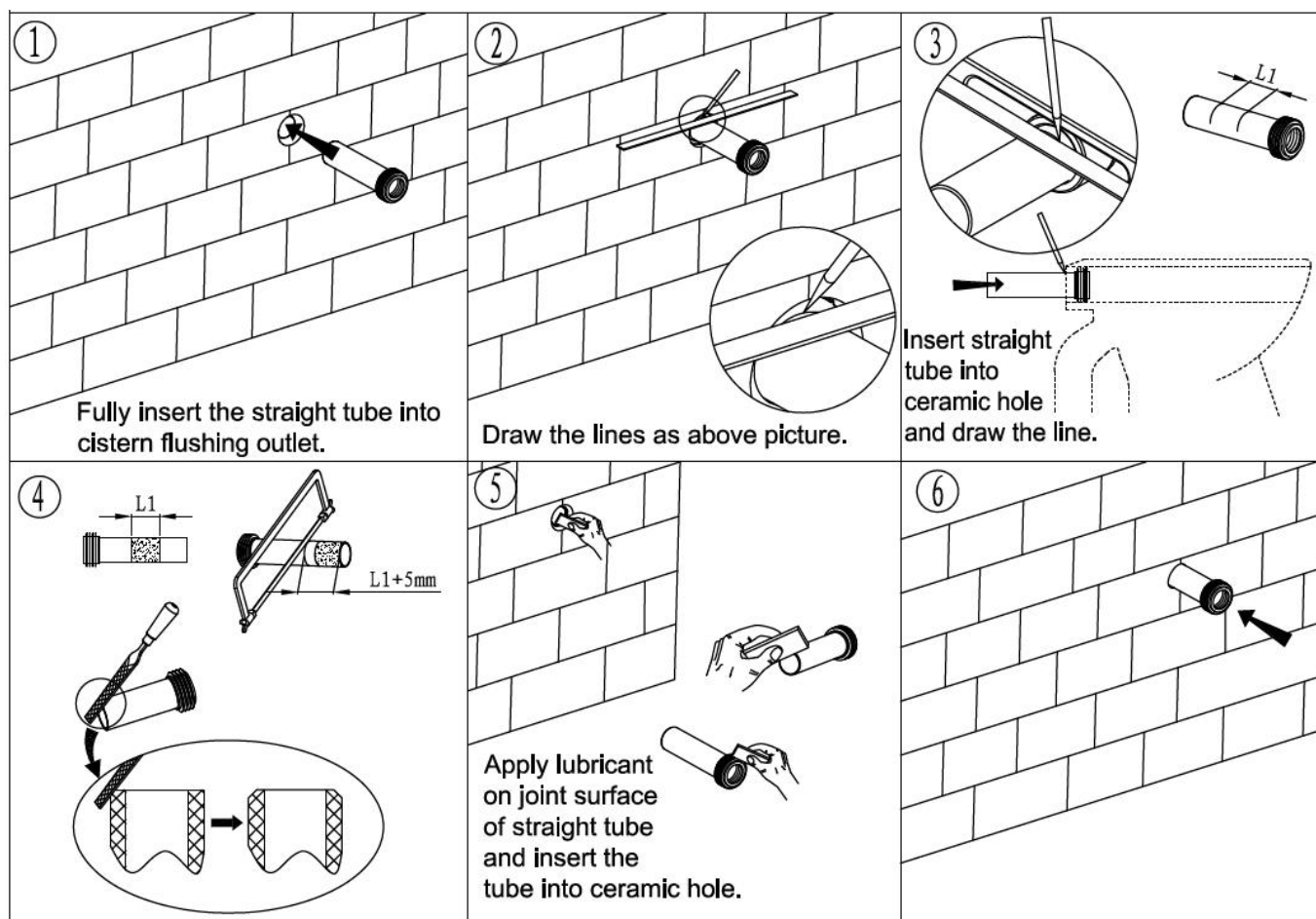


Plastic holder (to reserve space for installation actuator at wall building. To prevent dust impurities into tank at wall building)

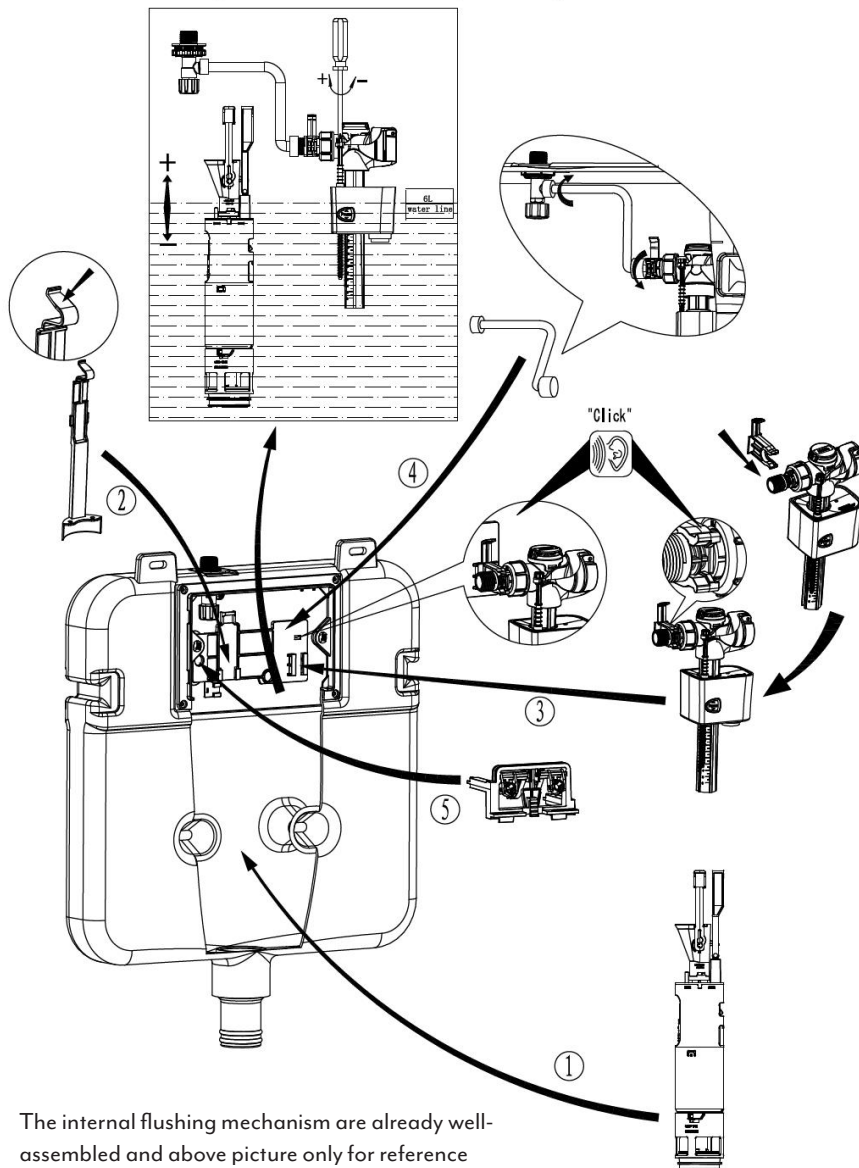
- ⑥ Wall thickness range 20-60mm (from outer exterior of cistern foam cover to finished decorated surface)



- ⑦ Mounting of ceramic bowl



## 8 Internal flushing mechanism assembly drawing



ABI